

January 8, 2016

## New Location!

The Brownsville Metropolitan Planning Organization has a new home. Our new address is City Plaza, 1034 E. Levee St., 2<sup>nd</sup> Floor, Brownsville, Texas 78520.

As was the case in the Tapiz Building, our former location for the past two decades, MPO staff amicably share space with the Brownsville Planning & Development Services Department. This will aid continued collaboration on transportation planning: land use issues.

Technical Committee meetings will be held in a conference room at City Plaza, every first Wednesday of the month. Please be advised that MPO Policy Committee meetings will be held at the City Hall, City Commission Chambers, 2<sup>nd</sup> floor, 1001 E. Elizabeth St. on the second Wednesday of each month.

At our new address, parking is available free of charge at two locations. There is a public parking lot at street level on East St. Charles Street, directly south of the City Plaza building. The other available parking area is inside the City Plaza garage: 2<sup>nd</sup> level. Entrance to the ramp is off of St. Charles Street, to the left.

Our office is located on a mezzanine level. See directions on page 4.

Please call ahead for special needs accommodations and directions to an accessible route to our floor level.

For more information, please call Mark Lund, MPO Director, at 548-6150.

# Brownsville

Metropolitan Planning Organization

### IN THIS ISSUE page

<b>ACTIVE TRANSPORTATION</b>	<b>2</b>
<b>TIP DEVELOPMENT</b>	<b>3</b>
<b>COMMENT SHEET</b>	<b>6</b>



City Plaza, 1034 E. Levee St. 2<sup>nd</sup> Floor  
Brownsville, TX

## Upcoming Policy Committee Meetings

Wednesday, January 13, 2016  
At 10 a.m.

Wednesday, February 10, 2016  
At 10 a.m.

Wednesday, March 9, 2016  
At 10 a.m.

**City Hall, City Commission Chambers, 2<sup>nd</sup> Floor, 1001 E. Elizabeth St., Brownsville, TX 78520**

Note: Brownsville MPO Policy Committee Meetings are now televised effective September 1, 2015. Archived recordings of these meetings will be loaded onto the Brownsville MPO website: [www.brownsvillempo.org](http://www.brownsvillempo.org).

## **City of Brownsville Lower Rio Grande Valley Active Transportation and Tourism Plan**

The intent of this plan is to identify economic opportunities to develop a regional network of infrastructure facilities to be used by tourists and local residents. The plan considers existing and future attractions in partner cities throughout Cameron County, including Palo Alto Battlefield and Laguna Atascosa Refuge and South Padre Island World Birding Center.

The Legacy Foundation has provided \$100,000 for this planning effort. Although ten local governments have provided matching funds, the City of Brownsville is the lead agency.

Steering committee meetings have been on-going since August, 2015.

Halff Associates has been hired by the City of Brownsville to provide professional services to work with Lower Rio Grande Valley communities to identify key tourism destinations. Further, this consultant firm will develop an initial "tool kit" of different facility types, such as sidewalk paths, bike lanes, off-street trails, cycle tracks and bicycle boulevards to allow and promote active transportation to and from Rio Grande Valley tourist destinations.

MPO staff will be attending the next meeting to be held later this month.

## **Annual Listing of Projects and Annual Performance & Expenditure Report**

What is the Annual Listing of Projects (A.L.P.)?

The A.L.P. is a list of those improvement projects which were started in Fiscal Year (F.Y.) 2015 with MPO funds.

What is the Annual Performance & Expenditure Report (A.P.E.R.)?

The A.P.E.R. outlines F.Y. 2015 planning work tasks conducted by the MPO; as well as the associated financial outlays or costs.

Invitation:

The Brownsville MPO Policy Committee members will hear (take) public comments or questions on the MPO's Annual Listings of Projects (A.L.P.) and the MPO's F.Y. 2015 Annual Performance & Expenditure Report (A.P.E.R.) at the MPO meeting to be held at 10:00 a.m., on Wednesday, January 13, 2016 at Brownsville City Hall Commission Chambers, 2<sup>nd</sup> floor, 1001 E. Elizabeth St., Brownsville, Texas.

Persons may view the contents of both documents via the MPO's website at [www.brownsvillempo.org](http://www.brownsvillempo.org) or [mpo.cob.us](http://mpo.cob.us).

# LET US HEAR FROM YOU!

## Development of the FY 2017-2020 Transportation Improvement Program (TIP)

- Selection of project awards through the various funding categories.

To view the current TIP go to [www.brownsvillemo.org](http://www.brownsvillemo.org) or visit the Brownsville MPO office. Two more years are in the process of being added to this existing document. Call us for information on proposed amendments.

You may submit comments via mail, e-mail, online and/or telephone.

The public comment period closes at 5:00 p.m. on March 31, 2016.

Written or verbal comments can be provided on two different dates:

### MPO Open House

#### Re: TIP

- **Main Branch Library**  
2600 Central Boulevard  
Brownsville, TX 78520  
Thursday, February 11, 2016  
Time: 9:30 a.m. – 11:45 a.m.
- **Southmost Branch Library**  
4320 Southmost Blvd  
Brownsville, TX 78521  
Tuesday, February 16, 2016  
Time: 1:30 p.m. - 3:45 p.m.

\* For special needs accommodations, please call (956) 548-6150  
\* Para necesidades especiales por discapacidad o para interpretación del idioma, llame al (956) 548-6150

Bring Your Ideas

-

Discuss Traffic Challenges

-

Get Informed

About the Process

-

MPO Sponsored vs. Sponsored by Local Agencies

-

Ask Questions

-

Visit with Us

### Contact:

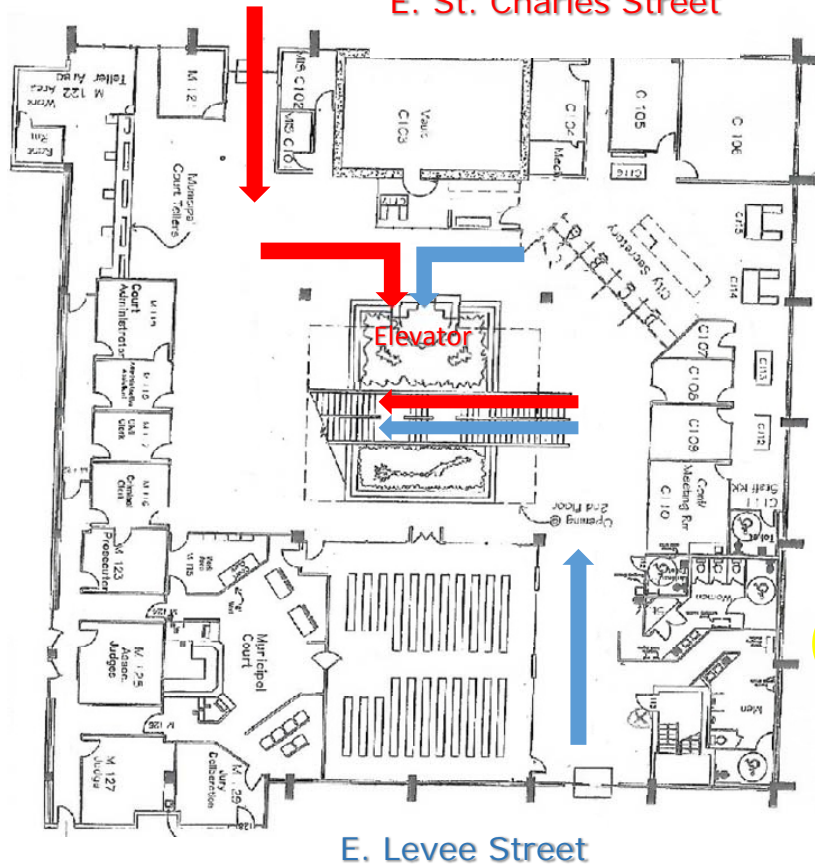
#### Brownsville MPO

City Plaza Building  
1034 E. Levee Street,  
2nd Fl.  
Brownsville, Texas 78520  
(956) 548-6150

[www.brownsvillemo.org](http://www.brownsvillemo.org)  
or  
[mpo.cob.us](http://mpo.cob.us)

City Plaza  
Garage

Street Level Parking  
E. St. Charles Street

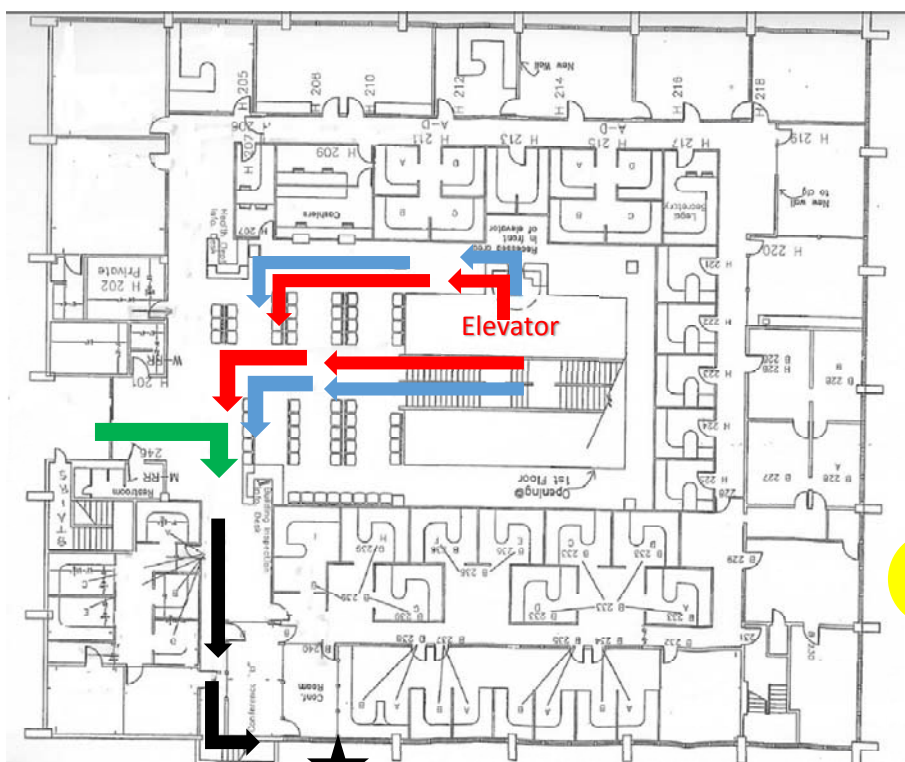


N  
First Floor

**Follow:**

- Red arrows from E. St. Charles Street.
- Blue arrows from E. Levee Street
- Green arrows from City Plaza Garage
- Black arrows to Planning and Development Services Department

City Plaza  
Garage  
2<sup>nd</sup> Level



N  
Second Floor

★ Planning & Development Services Department  
through double doors





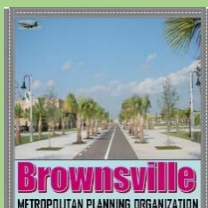
### WHAT IS AN MPO?

A Metropolitan Planning Organization (MPO) is a regional policy board, required in urbanized areas with populations over 50,000 and designated by local officials and the governor of the state.

# Brownsville Metropolitan Planning Organization

c/o City of Brownsville Planning &  
Development Services Department  
P.O. Box 911  
1034 E. Levee St. 2<sup>nd</sup> Floor  
Brownsville, TX 78520

Fax: (956) 548-6144  
E-mail: [bmpto@cob.us](mailto:bmpto@cob.us)  
Visit the MPO webpage:  
[www.brownsvillempo.org](http://www.brownsvillempo.org) or  
[mpo.cob.us](http://mpo.cob.us)



## About Us

The Brownsville Metropolitan Planning Organization provides administrative support and technical services to coordinate, carry out and conduct transportation planning for Brownsville, Los Fresnos, the Town of Rancho Viejo and unincorporated parts of the MPO study area.

The activities conducted by the Brownsville Metropolitan Planning Organization (MPO) are intended to identify policies, programs and improvement projects to address area transportation activities and needs. The adoption of transportation plans and policies by the MPO is an integral step in the process of obtaining federal funding for transportation improvements, and transit activities.

## Contact

Mark Lund, MPO Director  
(956) 548-6154

Alfonso Vallejo, MPO Deputy Director  
(956) 548-6158

Georgina Lopez, MPO Transit Planner II  
(956) 574-6696

Monica Tellam, MPO Transit Planner  
(956) 541-4881

Alicia Justilian, Administrative Specialist  
(956) 548-6143

## New Year...New You! Get up and Ride



Brownsville Metropolitan Planning Organization  
City of Brownsville Planning Department  
PO Box 911  
1034 E. Levee St. 2nd Floor  
Brownsville, TX 78520

[Addressee]  
[Street Address]  
City, ST, Zip Code

NAME/NOMBRE	COMMENTS/COMENTARIOS
ADDRESS/DIRECCIÓN	
PHONE/TELÉFONO	
<p>PLEASE HELP US IMPROVE TRANSPORTATION IN BROWNSVILLE BY SENDING US YOUR IDEAS AND COMMENTS. WE WANT TO HEAR FROM YOU. COMMENTS AND QUESTIONS CAN BE ADDRESSED TO:</p> <p>Brownsville Metropolitan Planning Organization c/o Brownsville Planning &amp; Development Services Dept. P.O. Box 911 1034 E. Levee St., 2<sup>nd</sup> floor Brownsville, TX 78520</p> <p>Or E-mail: <a href="mailto:georgina.lopez@cob.us">georgina.lopez@cob.us</a></p>	
<p>POR FAVOR AYUDENOS A MEJORAR EL SISTEMA DE TRANSPORTE EN BROWNSVILLE. QUEREMOS SU OPINIÓN DE USTED. ENVÍENOS SUS IDEAS, COMENTARIOS Y PREGUNTAS A LA SIGUIENTE DIRECCIÓN:</p> <p>Brownsville Metropolitan Planning Organization c/o Brownsville Planning &amp; Development Services Dept. P.O. Box 911 1034 E. Levee St. 2<sup>nd</sup> floor Brownsville, TX 78520</p> <p>O Correo Electrónico: <a href="mailto:georgina.lopez@cob.us">georgina.lopez@cob.us</a></p>	